

# Automatic Shutdown UPS

Configuring  
 Windows XP  
 For TSi UPS

Auto-shutdown

UPS signal polarities

Hibernation

## Instructions for Configuring System Auto-Shutdown in Windows XP Professional®

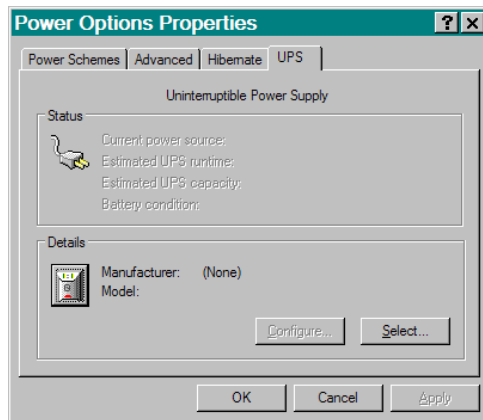
Windows XP Professional now has UPS based computer system automatic shutdown built-in.

### Preparing for UPS configuration

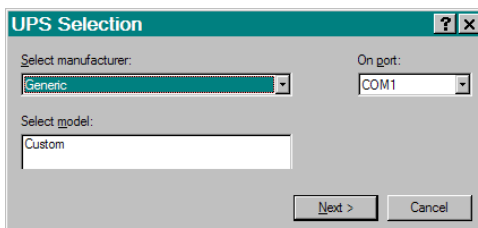
*Before you start the configuration in Windows XP, make sure your UPS communication cable is properly plugged into a COM port on your computer. To help prevent any possible damage, do this while both the computer and UPS are turned off, and both units have their plugs inserted into properly grounded outlets.*

### Setting up UPS power options

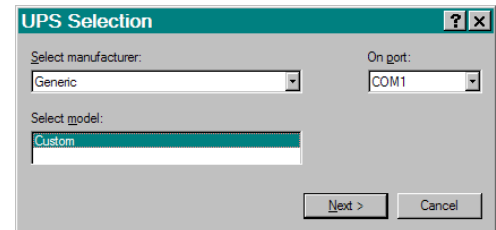
1. Click **Windows - Start > Control Panel > Power Options**, then the **UPS** tab.



2. Then, **click on the Select button**. This will open up the UPS selection dialog box.
3. Under Select Manufacturer, **click on the drop-down menu button**, and **click on Generic**.



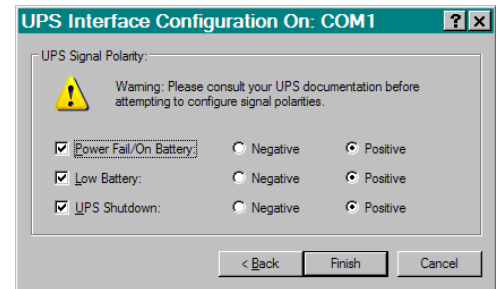
4. Under Select model, **click on Custom**.



5. **Check that the Default Port Setting is correct** (probably COM 1). If your UPS is plugged into a different port, change it accordingly.
6. **Click on the Next button**.

### UPS interface configuration

7. **Checkmark all three boxes for: Power Fail/On Battery, Low Battery, and UPS Shutdown.**



8. Select **Positive** polarity for all three.
9. Then, **click on the Finish button**. This will then open up the Power Options Properties dialog box again.

#### Please Note:

*These instructions are for configuring Windows XP Pro for TSi Power UPS. Other software may require different instructions, but the **Power Fail, Low-Battery and UPS Shutdown** signal polarities being **positive** will remain the same.*



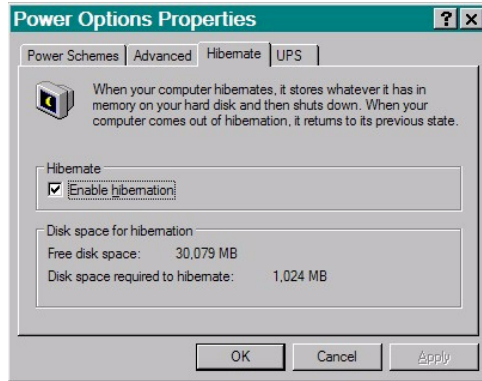
**TSi Power Corporation**  
 1103 West Pierce Ave  
 Antigo, WI 54409 USA  
 800 874 3160 (USA only)  
 Phone +1 715 623 0636  
 Fax +1 715 623 2426  
 sales@tsipower.com  
 www.tsipower.com  
 Copyright © 2007 TSi

# Automatic Shutdown

## Defining UPS power options

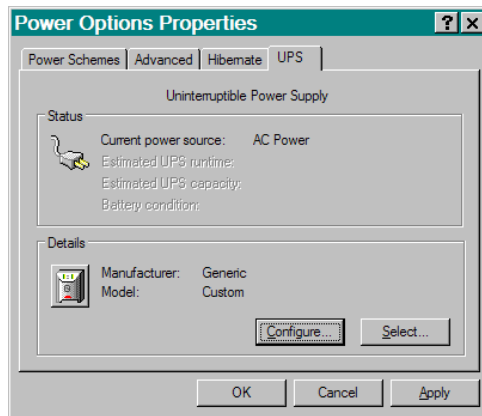


10. Click on the Hibernation tab.



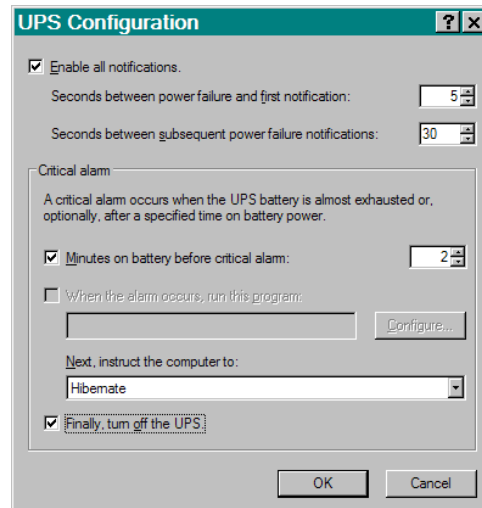
11. Checkmark **Enable hibernation** if you want the system to be able to save your open files and conduct an orderly shutdown after a certain amount of time. Except for certain unusual situations, this is usually the preferred choice.

12. Next, click on the **UPS** tab again. Then, click on the **Configure** button.



## Setting up your UPS configuration

13. Now, set up the UPS Configuration.

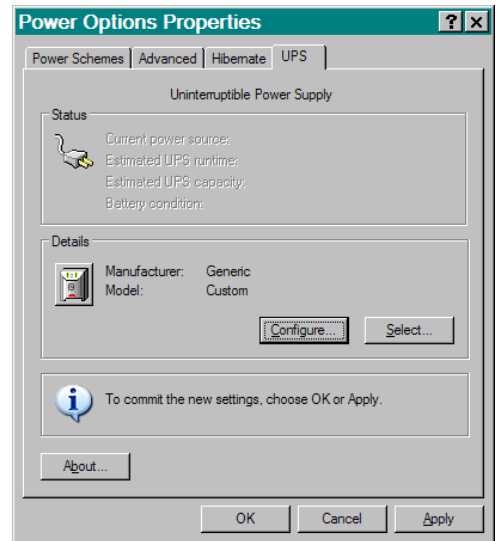


14. Checkmark the **Enable all notifications** box, and set for 30 seconds, or other time, depending on your needs. Generally, electric utilities have automatic “reclosure” operations which attempt to restore power up to 3 times, each time taking about 10 seconds. If power hasn’t been restored after 30 seconds, you usually are in a “hard down” situation, and most likely will be out of power for at least 30 minutes.

15. In the Critical alarm area, checkmark the **Minutes on battery before critical alarm**. To preserve battery life, once you are past 30 seconds during an outage, it is usually advisable to start hibernation/shutdown, or shutdown, as soon as possible. Two minutes is the fastest setting.

16. Checkmark the **Finally turn off the UPS**. With this checked, the system will then automatically turn off the UPS, and it will automatically come back up when the AC power is restored.

17. Click on the **Okay** button. This will return the Power Options Properties dialog box with UPS tab.



18. Click on either **OK** or **Apply** to finish.

19. Save any files you may have open.

20. Open some test files.

21. Test the system with some outages a few times to ensure correct operation.

### Note:

Use a circuit breaker or some other safe means to simulate the outages. Do not just unplug the UPS, as doing so disconnects the safety ground.



**TSi Power Corporation**  
1103 West Pierce Ave  
Antigo, WI 54409 USA  
800 874 3160 (USA only)  
Phone +1 715 623 0636  
Fax +1 715 623 2426  
sales@tsipower.com  
www.tsipower.com  
Copyright © 2007 TSi